



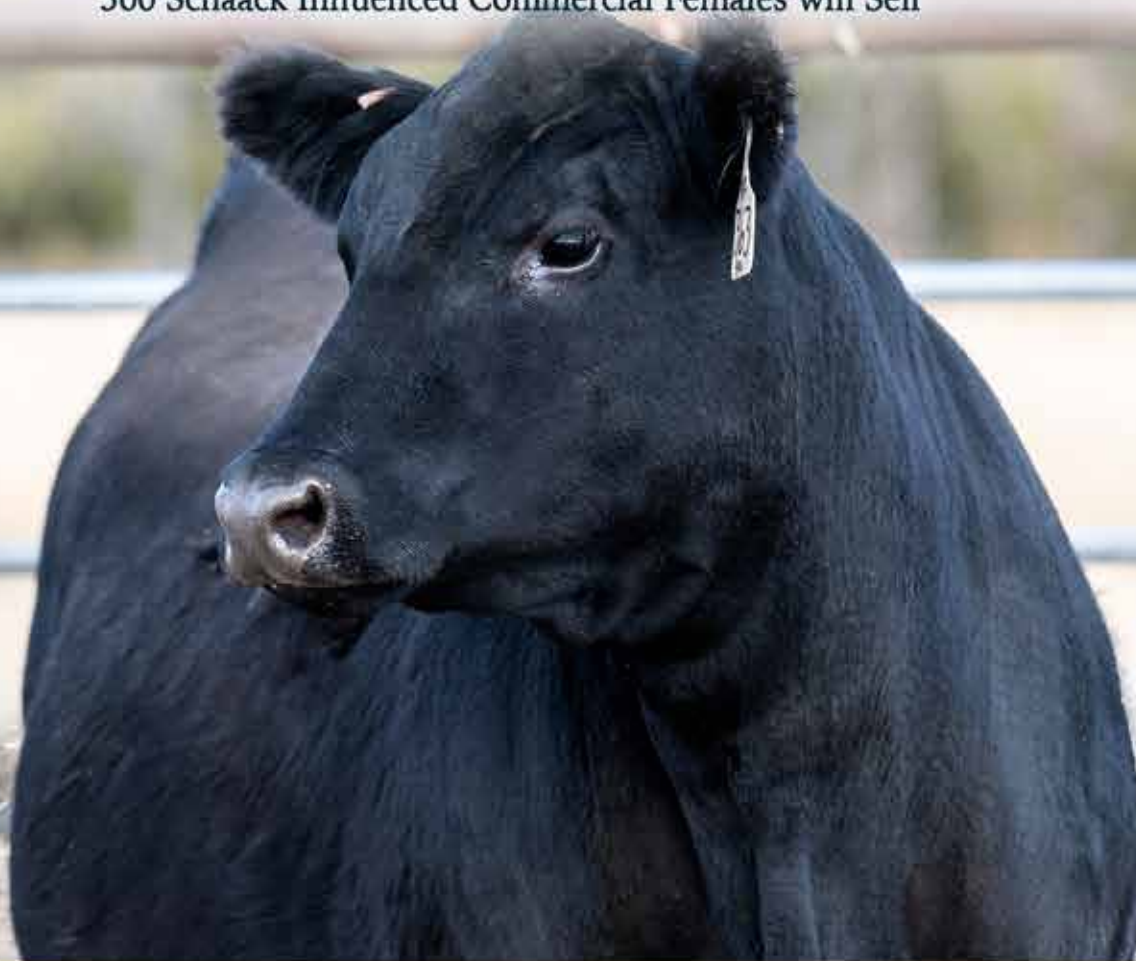
# Schaack Ranch



# MATERNAL GEMS FEMALE SALE

DECEMBER 21<sup>ST</sup> 2024 | 1PM PHILIP LIVESTOCK | PHILIP, SD

Selling 40 Registered Females, Donors, Bred Heifers, 2 Year Olds & Pick of the 2024 Heifers  
500 Schaack Influenced Commercial Females will Sell



# Schaack Ranch

## Fellow Cattle Producers

As we approach the end of 2024, it's remarkable to reflect on how quickly this year has flown by and all that it has brought. On behalf of the entire Schaack Ranch team, we are delighted to invite you to our 2<sup>nd</sup> Annual Maternal Gems Female Sale, taking place on Saturday, December 21<sup>st</sup>.

At Schaack Ranch, we take immense pride in building cattle that truly check all the boxes. From exceptional phenotypes to standout performance numbers, we are committed to producing females that thrive under the demands of western South Dakota's rugged conditions. Longevity, fertility, and the ability to raise big calves while breeding back consistently are the hallmarks of our program.

This year, we're proud to offer some of the best females we've ever raised — cattle that are a true reflection of our philosophy and dedication to quality. These females are more than just livestock; they represent the heart and soul of what Schaack Ranch stands for: great maternal genetics that will drive success for generations.

The relationships we've built with our customers are at the heart of what we do, and we're truly grateful for the trust they've placed in Schaack Genetics. As a testament to these partnerships, we're honored to include co-signers who are offering exceptional replacement females in this sale.

With over 500 head of females available, this event offers a tremendous selection. Whether you're seeking donors, elite embryos, expanding your registered herd, sourcing specific genetics, or adding top tier commercial replacement females, you'll find options that meet your needs.

If you have any questions or need additional details about the sale, don't hesitate to reach out—we're just a phone call away.

*The Schaack's*

*Welcome to the herd*  
**Avery May**  
**November 12, 2024**



# 2024 Schaack Ranch Maternal Gems Sale

SATURDAY DECEMBER 21<sup>ST</sup>, 2024 | 1PM PHILIP LIVESTOCK | PHILIP, SD  
**OVER 500 FEMALES SELLING!**

#### Schaack Ranch:

Clay & Holly Schaack  
23650 Sage Creek Road • Wall, SD 57790  
605-279-2869 or 605-685-3311  
www.SchaackRanch.com

#### Auctioneer:

Wyatt Schaack.....308-202-0004

#### Sale Day Phones:

Clay.....605-685-3311  
Wyatt.....308-202-0004  
Wynn.....605-441-9355  
Barn.....605-859-2577

#### Sale Representative:

Ryan Casteel - Cattle Business Weekly.....605-423-6000  
Andrew Swanson - American Angus Association....507-829-4133

#### Sale Location:

Philip Livestock Market, LLC, 607 E Pleasant St., Philip, SD 57567

#### Delivery:

Delivery is at the cost of the buyer and the buyer's risk. Schaack Ranch will assist in any way possible and provide a list of truckers to assist you with transportation of your purchases.

#### Inspection of Cattle:

All females will be onsite on Friday, December 20th by 2pm. Videos will be able to be viewed online at [www.DVAuction.com](http://www.DVAuction.com)

#### Health:

All cattle will be accompanied by proper health certificates for interstate shipment.

#### Pregnancy Examination:

All cattle have been pregnancy checked by a competent veterinarian and are called safe to the A.I. or pasture dates as best can be determined by advanced palpation. In respect to due dates, they are not unconditionally guaranteed, other than the fact they are pregnant.

#### Embryo Packages:

The Embryos selling are in packages of four each. For each package selling with four embryos the guarantee will be for two pregnancies if implanted by a certified technician. Buyer will be responsible for shipping expenses.

#### Registered Lot Guarantees:

All registered females being sold are guaranteed sold to be pregnant.

#### Commercial Lot Guarantees:

All commercial lots being sold are between buyer and co-signer.

Supplement Sheets will be available on sale day with sale order and update information. Announcements from the sale block will take precedence over printed material.

#### Catalog Design:

Branding Impressions.....605-347-0402

**DVAuction**  
Broadcasting Real-Time Auctions

Never Miss An Auction Again!  
Watch & Bid online for FREE!

**Visit [www.DVAuction.com](http://www.DVAuction.com)  
and Register Today!**

For General Questions Please Contact Our Office:  
(402) 316-5460 or [support@dvauction.com](mailto:support@dvauction.com)



Lot 1



## Schaack Desiree 331

DOB: 01/21/23 Tattoo: 331 Registration #: 21017176

Cherry Creek Land Grant  
Connealy Clarity  
Breshie of Conanga 6988

K C F Bennett Homestead  
Cherry Crk Eva B27 M  
Connealy Confidence Plus  
Brelly of Conanga 367

V A R Legend 5019  
GVC Desiree F024  
G A R Daybreak 1402

V A R Discovery 2240  
PF CC&7 Henrietta Pride 1044  
MCC Daybreak  
G A R 5050 New Design N549

CED	BW	WW	YW	Milk	Marb	RE	\$M	\$W	\$B	\$C
12	-1	74	138	26	1.6	0.92	93	77	209	364

CED	BW	WW	YW	DMI	YH	SC	Doc	HP	CEM	Milk	MW	MH	CW	Marb	RE	Fat	Tend
12	10	31	15	68	84	18	41	28	48	60	68	91	23	2	23	50	21



Sire of Lot 1 - Connealy Clarity



Dam of Lot 1  
GVC Desiree F024

### • Selling half-interest with option to double

Schaack Desiree 331 is a standout Clarity daughter, backed by our highly utilized donor cow, GVC Desiree F024. She boasts impressive EPDs, including a top 10% CED, top 20% yearling weight, and top 3% marbling, making her the total package with calving ease, growth potential, and exceptional carcass traits. If you're seeking a female that can make an immediate impact on your herd, Schaack Desiree 331 deserves your attention! Sells bred, exposed to Schaack Home Run / Schaack Satisfaction due to calve 3/28/25. Selling half interest with option to double and own full interest.

- Top 10% CED and 10% BW, Top 25% WW, Top 20% YW
- Top 3% Marb, Top 25% RE
- Top 2% \$M, Top 15% \$W, Top 5% \$B, Top 1% \$C



# Pick of the 2024 Heifers

## Elevate Your Herd with Schaack Ranch Spring Replacement Heifers

Here's your chance to advance your program by selecting from **100** top-tier spring replacement heifers from the Schaack Ranch.

Our cow herd is built to excel under the rugged, challenging conditions of western South Dakota. These females are bred to thrive, displaying traits of longevity, fertility, and the ability to consistently raise big, healthy calves while breeding back year after year.

### What Sets These Heifers Apart:

- **Hardiness:** Raised under real-world conditions, these heifers are ready to work as hard for you as they would for us.
- **Breeding Quality:** Developed in breeding shape, they have been managed with no special treatment—just as if they were staying in our own program.
  - **Proven Traits:** Selected for the traits that matter most: resilience, performance, and productivity.
- These heifers have not been treated any differently than if we were keeping them ourselves, running out and in breeding shape.

### Your Opportunity to Build the Future of Your Herd

This is more than just a heifer selection—it's an opportunity to step into the heart of Schaack Ranch's genetics and philosophy. These females represent what we value most in our herd and are a cornerstone for any operation looking to enhance its foundation.

### Ready to Choose?

- Heifers can be viewed anytime.
- Visit our website at [www.SchaackRanch.com](http://www.SchaackRanch.com) to see the current inventory.
- Selection must be made by **March 1, 2025**.

Don't miss this unique opportunity. For inquiries or to schedule a visit, contact Clay at 605-685-3311.



**Schaack Home Run**  
Reg #: 20224351



**Schaack Load Up**  
Reg #: 19982788



**E&B Wildcat 9402**  
Reg #: 19810163



**FHCC Foundation 1558**  
Reg #: 20119569



**Schaack Satisfaction**  
Reg #: 19682617



**Connealy Commerce**  
Reg #: 20132642



**RAR Relentless**  
Reg #: 20189520



3

## Schaack Bando 367

DOB: 02/27/23 Tattoo: 367 Registration #: 21016882

G A R Home Town  
Schaack Home Run 1002

KW 7010 1664 Consensus 3405

G A R Ashland  
Chair Rock Sure Fire 6095  
Connealy KW 1664 Consensus  
Rita 7O41 of Rita 5M13 OBJ

Schaack Security  
Schaack Bando 110  
Schaack Bando 572

BUBS Southern Charm AA31  
KW 4453 Patriot 6193  
Connealy Stingray 9618  
Schaack Bando 204

CED	BW	WW	YW	Milk	Marb	RE	\$M	\$W	\$B	\$C
14	-0.3	70	119	36	1.24	1.1	80	84	177	310

CED	BW	WW	YW	DMI	YH	SC	Doc	HP	CEM	Milk	MW	MH	CW	Marb	RE	Fat	Tend
5	10	80	77	91	85	95	68	39	97	22	90	75	73	15	20	45	69

Schaack Bando 367 is an impressive daughter of Schaack Home Run, offering a well-rounded EPD profile that sets her apart. With a top 4% CED and milk, top 15% marbling, top 10% ribeye, and outstanding index values in the top 4% for \$W and top 10% for \$C, she truly checks all the boxes. She's a game-changer for anyone seeking a high-impact female for their herd. Sells bred, exposed to Schaack Home Run / Schaack Satisfaction due to calve 4/17/25.

- Top 4% CED, Top 20% BW, Top 35 % WW, Top 4% Milk
- Top 15% Marb, Top 10% RE
- Top 10% \$M, Top 4% \$W, Top 20% \$B, Top 10% \$C





Lot 5

4

### Schaack Eppionia 3205

DOB: 04/29/23 Tattoo: 3205 Registration #: 21016871

G A R Home Town  
Schaack Home Run 1002  
KW 7010 1664 Consensus 3405

G A R Ashland  
Chair Rock Sure Fire 6095  
Connealy KW 1664 Consensus  
Rita 7O41 of Rita 5M13 OBJ

TEX Playbook 5437  
Schaack Eppionia 054  
Schaack Eppionia 894

Basin Payweight 1682  
Rita 1C43 of 9M26 Complete  
Basin Advance 3134  
Schaack Eppionia 619

CED	BW	WW	YW	Milk	Marb	RE	\$M	\$W	\$B	\$C
11	0.6	68	121	44	0.84	0.93	91	85	164	304

CED	BW	WW	YW	DMI	YH	SC	Doc	HP	CEM	Milk	MW	MH	CW	Marb	RE	Fat	Tend
5	6	77	60	63	65	61	48	10	53	1	88	65	53	26	39	36	73

Schaack Eppionia 3205 is a standout female, combining exceptional genetics with outstanding maternal strength. As a daughter of the renowned TEX Playbook, she offers a well-rounded EPD profile. Her dam, a 2020 model, adds further credibility with an impressive 104 Weaning Ratio and 105 Yearling Ratio, reflecting consistent productivity and performance.

With a top 15% CED, top 1% milk, top 2% \$M, and top 4% \$W, Schaack Eppionia 3205 covers all the bases. Her ability to excel across calving ease, maternal traits, and profitability makes her a game-changer for any operation. Sells bred, exposed Schaack Home Run / Schaack Satisfaction due to calve 3/28/25.

- Top 15% CED, Top 1% Milk
- Top 25 % RE, Top 2 % \$M, Top 4 % \$W, Top 15% \$C

5

### Schaack Lass 301

DOB: 04/01/23 Tattoo: 301 Registration #: 21016884

G A R Home Town  
Schaack Home Run 1002  
KW 7010 1664 Consensus 3405

G A R Ashland  
Chair Rock Sure Fire 6095  
Connealy KW 1664 Consensus  
Rita 7O41 of Rita 5M13 OBJ

Connealy Black Granite 432  
Schaack Lass 0105  
Schaack Lass 201

Connealy Black Granite  
Eilganna of Conanga 777  
Schaack Upward B905  
V D A R Lass 9666

CED	BW	WW	YW	Milk	Marb	RE	\$M	\$W	\$B	\$C
8	1.9	77	124	29	0.93	0.91	80	81	167	297

CED	BW	WW	YW	DMI	YH	SC	Doc	HP	CEM	Milk	MW	MH	CW	Marb	RE	Fat	Tend
50	63	47	70	38	77	77	85	13	87	40	77	88	47	37	24	59	2

Schaack Lass 301 ranks in the top 20% for weaning weight and the top 25% for ribeye, showcasing her growth and carcass potential. Her maternal and profitability traits shine with a top 10% ranking for both \$M and \$W, making her a well-rounded asset for any operation. Sells bred, exposed to Schaack Home Run / Schaack Satisfaction due to calve 4/7/25.

- Top 20% WW, Top 25% RE, Top 10% \$M, Top 10% \$W, Top 20% \$C

# 6

## Schaack Elluna 3213

DOB: 04/10/23 Tattoo: 3213 Registration #: 21016873

G A R Home Town  
Schaack Home Run 1002  
KW 7010 1664 Consensus 3405

G A R Ashland  
Chair Rock Sure Fire 6095  
Connealy KW 1664 Consensus  
Rita 7041 of Rita 5M13 OBJ

Schaack Jeremiah 7026  
Schaack Elluna 005  
Schaack Elluna 616

G A R Jeremiah  
Schaack Barbaramere 302  
Connealy Stingray 9618  
Schaack Elluna 220

CED	BW	WW	YW	Milk	Marb	RE	\$M	\$W	\$B	\$C
14	-0.4	66	120	37	0.85	1.05	81	77	161	290

CED	BW	WW	YW	DMI	YH	SC	Doc	HP	CEM	Milk	MW	MH	CW	Marb	RE	Fat	Tend
14	36	53	51	69	81	25	26	5	93	10	76	68	28	54	11	38	54

A stunning, perfectly crafted Home Run daughter! Take a closer look at her pedigree—she's out of a beautifully uddered and impeccably structured 7026 daughter. This is quality and elegance wrapped into one exceptional package! Sells bred, exposed Schaack Home Run / Schaack Satisfaction due to calve 3/28/25.

- Top 4% CED, Top 20% BW, Top 4% Milk
- Top 15% RE, Top 10% \$M, Top 15% \$W, Top 20% \$C



# 7

## Schaack Pride 3203

DOB: 04/15/23 Tattoo: 3203 Registration #: 21016859

G A R Home Town  
Schaack Home Run 1002  
KW 7010 1664 Consensus 3405

G A R Ashland  
Chair Rock Sure Fire 6095  
Connealy KW 1664 Consensus  
Rita 7041 of Rita 5M13 OBJ

Schaack Virtue 6090  
Schaack Pride 081  
Schaack Pride 627

G A R Advance  
Woodside Rita 4P10 of 1351  
Connealy Trooper 3682  
Schaack Pride 231

CED	BW	WW	YW	Milk	Marb	RE	\$M	\$W	\$B	\$C
17	-2.4	49	89	31	1.61	0.24	83	61	133	256

CED	BW	WW	YW	DMI	YH	SC	Doc	HP	CEM	Milk	MW	MH	CW	Marb	RE	Fat	Tend
3	4	100	98	11	98	54	37	26	51	21	100	98	100	1	95	74	59

Schaack's Virtue builds exceptional females, this standout offers multiple generations of proven calving ease. Don't miss the chance to add her to your program! Sells bred to Schaack Load Up 0256 due to calve on 3/13/25.

- Top 1% CED, Top 2% BW, Top 20% Milk
- Top 3% Marb, Top 10% \$M







Lot 8



Sire of Lot 8  
Woodhill Authentic



## Schaack Pride Lady 390

DOB: 02/23/23 Tattoo: 390 Registration #: 21020772

Spring Cove Reno 4021  
Woodhill Authentic  
Woodhill Evergreen U181-A130

KM Broken Bow 002  
Spring Cove Liza 021  
Hoover Dam  
Woodhill Evergreen R53-U181

Schaack Security  
Schaack Pride Lady 184  
Lewis Pride Lady 158

BUBS Southern Charm AA31  
KW 4453 Patriot 6193  
Sitz Dash 10277  
Lewis Pride Lady 78

CED	BW	WW	YW	Milk	Marb	RE	\$M	\$W	\$B	\$C
10	0.9	91	141	28	0.94	1.1	75	95	152	272

CED	BW	WW	YW	DMI	YH	SC	Doc	HP	CEM	Milk	MW	MH	CW	Marb	RE	Fat	Tend
5	8	12	60	53	76	54	24	35	68	52	48	59	59	27	16	7	21

If growth and carcass quality are your priorities, Schaack Pride Lady 390 deserves your attention. This impressive daughter of Woodhill Authentic is built to add pounds to her calves while excelling in carcass traits.

She ranks in the top 3% for weaning weight, top 15% for yearling weight, top 30% for marbling, top 10% for ribeye, and top 1% for \$W. With her combination of power and profitability, 390 is a valuable addition to any program. Sells bred, exposed to Schaack Home Run / Schaack Satisfaction due to calve 4/12/25.

- Top 3% WW, Top 15% YW
- Top 30% Marb, Top 10% RE, Top 20% \$M, Top 1% \$W



9

## Schaack Barbaramere 317

DOB: 03/24/23 Tattoo: 317 Registration #: 21016887

GAR Discovery 6737H  
E & B Wildcat 9402  
E&B Lady Plus 643

V A R Discovery 2240  
G A R Ingenuity 3132  
Connealy Confidence Plus  
E&b Lady Credence 190

TEX Playbook 5437  
Schaack Barbaramere 096  
Schaack Barbaramere 302

Basin Payweight 1682  
Rita 1C43 of 9M26 Complete  
Connealy Consensus 7229  
Sitz Barbaramere 1223

CED	BW	WW	YW	Milk	Marb	RE	\$M	\$W	\$B	\$C
7	3.2	80	138	24	1.13	0.48	91	71	173	315

CED	BW	WW	YW	DMI	YH	SC	Doc	HP	CEM	Milk	MW	MH	CW	Marb	RE	Fat	Tend
25	49	22	32	72	67	97	36	7	33	64	51	55	12	16	71	98	60

Schaack Barbaramere 317, a standout daughter of E & B Wildcat 9402, masterfully combines growth and carcass quality. She ranks in the top 15% for weaning weight, top 20% for yearling weight, and top 20% for marbling, making her a versatile asset for performance-focused programs.

Her indexes place her in the top 2% for \$M and top 10% for \$C, highlighting her profitability and maternal excellence. Schaack Barbaramere 317 is the complete package, ready to elevate any herd. Sells bred to Schaack Satisfaction due to calve 3/13/25.

- Top 15% WW, Top 20% YW
- Top 20% Marb, Top 2% \$M, Top 25% \$W, Top 25% \$B, Top 10% \$C



# 10

## Schaack Miss Wix 337

DOB: 03/22/23 Tattoo: 337 Registration #: 21016885

GAR Discovery 6737H  
E & B Wildcat 9402  
E&B Lady Plus 643

V A R Discovery 2240  
G A R Ingenuity 3132  
Connealy Confidence Plus  
E&b Lady Credence 190

BUBS Southern Charm AA31  
Schaack Miss Wix 069  
Schaack Miss Wix 322

Silveiras Conversion 8064  
Hickory Hill Erica 009  
Connealy Stingray 9618  
Miss Wix 0175 of Mc Cumer

CED	BW	WW	YW	Milk	Marb	RE	\$M	\$W	\$B	\$C
15	-1.2	71	132	32	1.55	0.9	73	78	189	318

CED	BW	WW	YW	DMI	YH	SC	Doc	HP	CEM	Milk	MW	MH	CW	Marb	RE	Fat	Tend
3	8	41	17	80	35	23	69	32	73	18	67	60	33	3	23	68	73

A beautifully crafted Wildcat x Wix female that combines calving ease, impressive growth, and exceptional marbling. She's the complete package for any progressive program! Sells bred, exposed to Schaack Home Run / Schaack Satisfaction due to calve 4/12/25.

- Top 2% CED, Top 10% BW, Top 25% YW, Top 15% Milk
- Top 4% Marb, Top 25% RE, Top 10% \$W, Top 15% \$B, Top 10% \$C



Lot 10

# 11

## Schaack Shauna 347

DOB: 03/21/23 Tattoo: 347 Registration #: 21016856

GAR Discovery 6737H  
E & B Wildcat 9402  
E&B Lady Plus 643

V A R Discovery 2240  
G A R Ingenuity 3132  
Connealy Confidence Plus  
E&b Lady Credence 190

Connealy Black Granite 432  
Schaack Shauna 087  
Schaack Shauna 601

Connealy Black Granite  
Eilganna of Conanga 777  
Connealy Stingray 9618  
Schaack Shauna 019

CED	BW	WW	YW	Milk	Marb	RE	\$M	\$W	\$B	\$C
9	2.6	84	143	22	1.2	0.68	71	74	186	312

CED	BW	WW	YW	DMI	YH	SC	Doc	HP	CEM	Milk	MW	MH	CW	Marb	RE	Fat	Tend
32	72	8	16	92	61	46	48	53	7	78	21	28	8	9	42	95	6

Another outstanding Wildcat daughter who is sure to impress. Her maternal granddam is one of the best on the ranch, and she carries forward that legacy with remarkable growth, excellent carcass traits, and strong maternal numbers. She's a true asset for any program. Sells bred to Schaack Satisfaction due to calve 3/3/25.

- Top 10% WW, Top 10% YW
- Top 15% Marb, Top 20% \$W, Top 15% \$B, Top 10% \$C



Lot 11

# 12

## Schaack Elluna 346

DOB: 03/17/23 Tattoo: 346 Registration #: 21016881

GAR Discovery 6737H  
E & B Wildcat 9402  
E&B Lady Plus 643

V A R Discovery 2240  
G A R Ingenuity 3132  
Connealy Confidence Plus  
E&b Lady Credence 190

Connealy Black Granite 432  
Schaack Elluna 749  
Schaack Elluna 144

Connealy Black Granite  
Eilganna of Conanga 777  
V D A R Bridger 1026  
V D A R Elluna 6818

CED	BW	WW	YW	Milk	Marb	RE	\$M	\$W	\$B	\$C
9	1.2	69	111	25	1	0.69	77	74	170	297

CED	BW	WW	YW	DMI	YH	SC	Doc	HP	CEM	Milk	MW	MH	CW	Marb	RE	Fat	Tend
48	66	34	52	23	53	86	92	67	54	60	85	95	34	11	36	75	66

A truly well-made Wildcat daughter, out of a great uddered Black Granite female. Her 144 granddam has been one of the cornerstones of our cow herd, contributing to the solid foundation we've built over the years. This heifer brings top-tier genetics and exceptional maternal qualities to the table. Sells bred to Schaack Satisfaction due to calve 3/15/25.

- Top 25% Marb, Top 20% \$M, Top 20% \$W, Top 20% \$C



Lot 12



Lot 13

13

### Schaack Miss Wix 363

DOB: 04/06/23 Tattoo: 363 Registration #: 21016845

V A R Power Play 7018  
RAR Power Play 0445  
Vintage Blackcap 5419

Basin Payweight 1682  
Sandpoint Blackbird 8809  
V A R Discovery 2240  
V A R Blackcap 9319

KW Overload 6223  
Schaack Miss Wix 944  
Schaack Miss Wix 746

Plattermere Weigh Up K360  
KW 3137 Consensus 7229 3033  
Pine View Prophet P414  
Schaack Miss Wix 439

CED	BW	WW	YW	Milk	Marb	RE	\$M	\$W	\$B	\$C
10	1.3	79	134	40	0.16	0.47	85	91	127	250

CED	BW	WW	YW	DMI	YH	SC	Doc	HP	CEM	Milk	MW	MH	CW	Marb	RE	Fat	Tend
28	44	26	33	36	72	45	45	24	47	5	83	85	34	95	56	45	93

Schaack Miss Wix 363 is an exceptional daughter of our herd sire RAR Power Play 0445, combining proven performance and elite genetics. Her dam, a 2019 model, boasts a consistent record with a 108 Weaning Ratio and 104 Yearling Ratio on three calves, exemplifying reliable productivity.

Schaack Miss Wix 363 excels in growth traits, ranking in the top 15% for weaning weight and top 20% for yearling weight. Her maternal and profitability metrics are equally impressive, with top 2% Milk, top 4% \$M, and top 1% \$W rankings. This remarkable female is built to deliver consistent results and elevate herd performance. Sells bred to E & B Wildcat 9402 due to calve 3/13/25.

- Top 20% CED, Top 15% WW, Top 20% YW, Top 2% Milk
- Top 4% \$M, Top 1% \$W

14

### Schaack Elsiemere 325

DOB: 03/29/23 Tattoo: 325 Registration #: 21016872

V A R Power Play 7018  
RAR Power Play 0445  
Vintage Blackcap 5419

Basin Payweight 1682  
Sandpoint Blackbird 8809  
V A R Discovery 2240  
V A R Blackcap 9319

KW Overload 6223  
Schaack Elsiemere 975  
Schaack Elsiemere 796

Plattermere Weigh Up K360  
KW 3137 Consensus 7229 3033  
V A R Empire 3037  
Elsiemere 9216 OF Mc Cumber

CED	BW	WW	YW	Milk	Marb	RE	\$M	\$W	\$B	\$C
2	2.9	89	147	37	0.91	0.74	71	88	159	277

CED	BW	WW	YW	DMI	YH	SC	Doc	HP	CEM	Milk	MW	MH	CW	Marb	RE	Fat	Tend
91	87	2	10	98	4	45	18	1	76	7	11	10	5	26	43	66	95

Her dam has a 106 Weaning Ratio and 104 Yearling Ratio on 3 calves. Sells bred to E & B Wildcat 9402 due to calve 3/3/25.

- Top 4% WW, Top 10% YW, Top 3% Milk, Top 2% \$W



Lot 14



Lot 15

15

## Schaack SC of Rita 4p10 933

DOB: 03/16/19 Tattoo: 933 Registration #: 19799355

Silveiras Conversion 8064  
BUBS Southern Charm AA31  
Hickory Hill Erica 009

BT Crossover 758N  
EXG Saras Dream S609 R3  
Connealy Stimulus 8419  
Hickory Hill Erica TA32

G A R Prophet  
Woodside Rita 4P10 of 1351  
Goode Complete 1351

C R A Bextor 872 5205 608  
G A R Objective 1885  
Summitcrest Complete 1P55  
Goode Predestined 8017

CED	BW	WW	YW	Milk	Marb	RE	\$M	\$W	\$B	\$C
6	1.9	90	144	30	1.51	0.7	85	94	171	307

CED	BW	WW	YW	DMI	YH	SC	Doc	HP	CEM	Milk	MW	MH	CW	Marb	RE	Fat	Tend
23	34	6	40	75	90	70	98	28	7	38	61	86	60	4	49	49	92

Selling half-interest with option to double

This impressive Southern Charm daughter demands your attention. She boasts a remarkable 107 Weaning Ratio and an IMF Ratio of 108, showcasing her exceptional performance and carcass quality.

Her elite EPD profile sets her apart. She is one of only two Southern Charm daughters with her unique combination of Weaning Weight, Yearling Weight, and Marbling. When you factor in her outstanding \$M and \$W indexes, she stands in a league of her own. She is the mother of Replica, who now stands at CRV.

Sells bred to RAR Signal 0418 due to calve 3/20/25. Selling half interest with option to double and own full interest.

- Top 1% WW, Top 4% YW, Top 25% Milk
- Top 1% Marb, Top 4% \$M, Top 1% \$W, Top 15% \$B, Top 4% \$C



**ORigen**  
Sire of Lots 15-16  
Bubs Southern Charm AA31



Dam of Lot 15  
Woodside Rita 4P10 of 1351

# 16

## Schaack Rita 1123

DOB: 09/20/21 Tattoo: 1123 Registration #: 20601033

Silveiras Conversion 8064  
**BUBS Southern Charm AA31**  
 Hickory Hill Erica 009

BT Crossover 758N  
 EXG Saras Dream S609 R3  
 Connealy Stimulus 8419  
 Hickory Hill Erica TA32

Connealy Stingray 9618  
**Schaack Rita of Stingray 814**  
 Woodside Rita 4P10 of 1351

Connealy Final Solution  
 Powa of Conanga 9618  
 G A R Prophet  
 Goode Complete 1351

CED	BW	WW	YW	Milk	Marb	RE	\$M	\$W	\$B	\$C
5	3.8	92	149	26	0.7	0.62	70	83	136	246

CED	BW	WW	YW	DMI	YH	SC	Doc	HP	CEM	Milk	MW	MH	CW	Marb	RE	Fat	Tend
41	73	5	30	70	25	22	69	68	20	69	29	30	39	46	49	47	64

This Southern Charm daughter presents a really nice profile, showcasing the exceptional results we've had with the Southern Charm x 4P10 cross. The pairing has worked exceptionally well for us, producing solid, high-quality offspring. She sells bred to Schaack Satisfaction, with a due date of 3/20/25, promising more outstanding genetics to come.

•Top 3% WW, Top 10% YW, Top 30% \$M, Top 5% \$W



Lot 16

# 17

## Schaack Miss Wix 1132

DOB: 09/11/21 Tattoo: 1132 Registration #: 20601124

Connealy Niobrara 5451  
**Connealy Gary**  
 Hertha of Conanga 1639

Connealy Confidence Plus  
 Britha of Conanga 167  
 Connealy Consensus  
 Herra of Conanga 4462

KW Overload 6223  
**Schaack Miss Wix 8146**  
 Schaack Miss Wix 461

Plattemere Weigh Up K360  
 KW 3137 Consensus 7229 3033  
 Connealy Stingray 9618  
 Schaack Miss Wix 246

CED	BW	WW	YW	Milk	Marb	RE	\$M	\$W	\$B	\$C
3	1.2	84	145	16	0.78	0.33	54	71	155	255

CED	BW	WW	YW	DMI	YH	SC	Doc	HP	CEM	Milk	MW	MH	CW	Marb	RE	Fat	Tend
86	83	4	4	28	29	41	30	96	30	97	14	39	30	37	76	57	99

Take a look at the pedigree here—featuring a powerful combination of Connealy Gary, KW Overload 6223, and Connealy Stingray. Stingray made a strong impact at Schaack Ranch, and we've seen that influence firsthand in this female. 461, her dam, was a tremendous donor for us, contributing greatly to the strength and consistency of our herd. Sells bred, exposed to Schaack Home Run/Schaack Satisfaction due to calve 4/10/25.

•Top 3% WW, Top 4% YW  
 •Top 25% Marb, Top 15% \$W, Top 25% \$B, Top 30% \$C



Lot 17

# 18

## Schaack Blackcap 334

DOB: 03/24/23 Tattoo: 334 Registration #: 21017188

Connealy Niobrara 5451  
**Connealy Gary**  
 Hertha of Conanga 1639

Connealy Confidence Plus  
 Britha of Conanga 167  
 Connealy Consensus  
 Herra of Conanga 4462

Raven Power Train E762  
**Schaack Blackcap 0100**  
 Schaack Blackcap 847

PA Power Tool 9108  
 Raven Emma E 4241  
 Connealy Trooper 3682  
 Schaack Blackcap 560

CED	BW	WW	YW	Milk	Marb	RE	\$M	\$W	\$B	\$C
6	0.3	72	131	24	0.36	0.78	51	66	136	227

CED	BW	WW	YW	DMI	YH	SC	Doc	HP	CEM	Milk	MW	MH	CW	Marb	RE	Fat	Tend
83	58	10	5	83	17	6	39	53	92	47	10	20	26	83	17	11	95

This exceptional Gary daughter, out of a perfectly uddered Power Train dam, boasts a top-tier profile with outstanding conformation. She is bred to the proven Schaack Satisfaction, with an expected calving date of March 8, 2025.

•Top 30% WW, Top 25% YW



Lot 18



Lot 19

19

## Schaack Pride 305

DOB: 03/21/23 Tattoo: 305 Registration #: 21020766

V A R Power Play 7018  
 VAR Play Maker 8582  
 Vintage Rita 5063

Basin Payweight 1682  
 Sandpoint Blackbird 8809  
 V A R Discovery 2240  
 SJH Complete of 6108 1564

Connealy Stingray 9618  
 Schaack Pride 536  
 Schaack Pride 231

Connealy Final Solution  
 Powa of Conanga 9618  
 Schaack Upward B905  
 B Pride 956 OF Mc Cumber

CED	BW	WW	YW	Milk	Marb	RE	\$M	\$W	\$B	\$C
6	0	72	128	23	0.82	0.66	64	67	154	264

CED	BW	WW	YW	DMI	YH	SC	Doc	HP	CEM	Milk	MW	MH	CW	Marb	RE	Fat	Tend
68	45	33	38	62	41	9	4	28	51	71	39	59	66	34	67	40	83

An impeccably made Playmaker daughter, this low-birth heifer excels with impressive maternal traits and a pedigree known for outstanding udders. She is bred to Schaack Satisfaction, with an expected calving date of March 3, 2025. with impressive maternal traits and a pedigree known for outstanding udders. She is bred to Schaack Satisfaction, with an expected calving date of March 3, 2025.

•Top 25% BW, Top 30% WW, Top 30% YW, Top 30% \$W



Sire of Lots 19-22  
 VAR Play Maker 8582



**20**

## Schaack Barbaramere 319

DOB: 03/17/23 Tattoo: 319 Registration #: 21020729

V A R Power Play 7018  
VAR Play Maker 8582  
Vintage Rita 5063

Basin Payweight 1682  
Sandpoint Blackbird 8809  
V A R Discovery 2240  
SJH Complete of 6108 1564

V A R Index 3282  
Schaack Barbaramere 8114  
Schaack Barbaramere 303

G A R Ingenuity  
Sandpoint Blackbird 8809  
Connealy Consensus 7229  
Sitz Barbaramere 1223

CED	BW	WW	YW	Milk	Marb	RE	\$M	\$W	\$B	\$C
5	4	79	155	38	0.75	0.83	66	71	179	298

CED	BW	WW	YW	DMI	YH	SC	Doc	HP	CEM	Milk	MW	MH	CW	Marb	RE	Fat	Tend
80	93	19	2	98	10	37	13	35	51	5	23	12	12	32	10	6	88

Check her out on sale day! This VAR Index granddaughter comes from some of the best genetics at Schaack Ranch. Sells bred to Schaack Satisfaction due to calve 3/3/25.

- Top 15% WW, Top 4% YW, Top 2% Milk
- Top 20% \$W, Top 20% \$B, Top 15% \$C

**22**

## Schaack Miss Wix 345

DOB: 03/22/23 Tattoo: 345 Registration #: 21020631

V A R Power Play 7018  
VAR Play Maker 8582  
Vintage Rita 5063

Basin Payweight 1682  
Sandpoint Blackbird 8809  
V A R Discovery 2240  
SJH Complete of 6108 1564

G A R Jeremiah  
Schaack Miss Wix 052  
Schaack Miss Wix 8112

G A R Prophet  
G A R Daybreak 642  
TEX Playbook 5437  
Schaack Miss Wix 244

CED	BW	WW	YW	Milk	Marb	RE	\$M	\$W	\$B	\$C
8	1.3	71	121	41	1.05	0.49	79	86	145	267

CED	BW	WW	YW	DMI	YH	SC	Doc	HP	CEM	Milk	MW	MH	CW	Marb	RE	Fat	Tend
29	51	39	51	63	54	55	36	63	18	1	72	85	74	20	52	75	39

A well-structured Playmaker daughter, out of the highly successful Prophet X Playbook cross that consistently delivers. Her dam, Miss Wix 052 is a moderate-framed, good-uddered Jeremiah daughter, bringing excellent maternal traits to the table. Sells bred, exposed to Schaack Home Run/Schaack Satisfaction due to calve 4/2/25.

- Top 1% Milk, Top 25% Marb, Top 15% \$M, Top 3% \$W



**21**

## Schaack Miss Wix 354

DOB: 03/29/23 Tattoo: 354 Registration #: 21020716

V A R Power Play 7018  
VAR Play Maker 8582  
Vintage Rita 5063

Basin Payweight 1682  
Sandpoint Blackbird 8809  
V A R Discovery 2240  
SJH Complete of 6108 1564

Connealy Stingray 9618  
Schaack Miss Wix 063  
Schaack Miss Wix 577

Connealy Final Solution  
Powa of Conanga 9618  
PA Valor 201  
Miss Wix 026 of Mc Cumber

CED	BW	WW	YW	Milk	Marb	RE	\$M	\$W	\$B	\$C
4	2.1	70	115	24	0.42	1.04	77	69	137	255

CED	BW	WW	YW	DMI	YH	SC	Doc	HP	CEM	Milk	MW	MH	CW	Marb	RE	Fat	Tend
60	55	32	78	58	64	21	7	70	71	71	60	74	44	87	5	20	67

Out of one of our best-producing cow lines, Mis Wix 577, known for consistently delivering top-quality progeny year after year. This heifer is poised to carry on her legendary legacy! Sells bred, exposed to Schaack Home Run/Schaack Satisfaction due to calve 3/23/25.

- Top 15% RE, Top 15% \$M, Top 30% \$W







Lot 23

23

## Schaack Rachel 387

DOB: 02/16/23 Tattoo: 387 Registration #: 21017280

Woodhill Blueprint  
Myers Fair-N-Square M39  
Myers Miss Beauty M136

Connealy Confidence Plus  
Woodhill Evergreen Z291-B233  
Connealy Thunder  
Myers Miss Beauty M476

G A R Phoenix  
Schaack Rachel 112  
Schaack Rachel 008

G A R Sure Fire  
G A R Prophet N744  
Sitz Onward 509R  
Sitz Rachel 915

CED	BW	WW	YW	Milk	Marb	RE	\$M	\$W	\$B	\$C
6	1.7	82	140	35	1.16	0.9	78	85	188	322

CED	BW	WW	YW	DMI	YH	SC	Doc	HP	CEM	Milk	MW	MH	CW	Marb	RE	Fat	Tend
82	89	2	11	93	4	9	65	11	37	15	9	5	4	5	15	47	39



ST Genetics  
Sire of Lots 23-29  
Myers Fair-N-Square M39

Schaack Rachel 387, a standout daughter of Myers Fair-N-Square M39, is a female you won't want to overlook. She combines growth, carcass quality, and exceptional maternal traits in one impressive package.

Her EPD profile is highlighted by top 10% weaning weight, top 15% yearling weight, top 10% Milk, and top 20% marbling, making her a well-rounded female with strong performance across the board. Additionally, her indexes rank her in the top 15% for \$M, top 3% for \$W, and top 10% for \$C, further showcasing her profitability and maternal excellence.

Her dam, a 2021 first calf heifer, produced outstanding results with a Weaning Ratio of 108 and a Yearling Ratio of 110 for Rachel 387. Sells bred, exposed to Schaack Home Run/Schaack Satisfaction due to calve 4/7/25.

- Top 10% WW, Top 15% YW, Top 10% Milk
- Top 20% Marb, Top 25% RE
- Top 15% \$M, Top 3% \$W, Top 15% \$B, Top 10% \$C

# 24

## Schaack Queen 303

DOB: 03/11/23 Tattoo: 303 Registration #: 21017409

Woodhill Blueprint  
Myers Fair-N-Square M39  
Myers Miss Beauty M136

Connealy Confidence Plus  
Woodhill Evergreen Z291-B233  
Connealy Thunder  
Myers Miss Beauty M476

G A R Jeremiah  
Schaack Queen 877  
Sua Final Answer Queen U814

G A R Prophet  
G A R Daybreak 642  
S A V Final Answer 0035  
Robbins Queen 6095

CED	BW	WW	YW	Milk	Marb	RE	\$M	\$W	\$B	\$C
11	-0.1	74	118	19	0.87	0.23	81	75	147	272

CED	BW	WW	YW	DMI	YH	SC	Doc	HP	CEM	Milk	MW	MH	CW	Marb	RE	Fat	Tend
18	30	20	69	10	97	20	64	41	45	95	79	95	66	27	88	80	41

Fair-N-Square daughters are known for their excellent udders and mothering ability, consistently raising big, strong calves. This heifer will follow in those footsteps, with a Jeremiah dam that boasts a superb udder and outstanding maternal traits. Sells bred to FHCC Foundation 1558 due to calve 3/13/25.

- Top 15% CED, Top 20% BW, Top 25% WW
- Top 10% \$M, Top 15% \$W

# 26

## Schaack Lass 357

DOB: 03/24/23 Tattoo: 357 Registration #: 21017424

Woodhill Blueprint  
Myers Fair-N-Square M39  
Myers Miss Beauty M136

Connealy Confidence Plus  
Woodhill Evergreen Z291-B233  
Connealy Thunder  
Myers Miss Beauty M476

V A R Empire 3037  
Schaack Lass 740  
Schaack Lass 437

A A R Ten X 7008 S A  
EXAR New Design 4212  
Rito 12F5 of 9O44 Rito 5M2  
Schaack Lass 104

CED	BW	WW	YW	Milk	Marb	RE	\$M	\$W	\$B	\$C
7	1.3	76	134	35	0.54	0.7	81	79	154	281

CED	BW	WW	YW	DMI	YH	SC	Doc	HP	CEM	Milk	MW	MH	CW	Marb	RE	Fat	Tend
34	32	42	41	66	39	28	35	2	31	15	37	33	30	43	51	80	98

Check out the \$M on this heifer! She's moderate in frame with great potential, combining pedigree and performance for impressive maternal value. Sells bred, exposed to Schaack Home Run/Schaack Satisfaction due to calve 3/28/25.

- Top 20% WW and YW, Top 10% Milk and \$M, Top 10% \$W, Top 30% \$C



# 25

## Schaack Queen 321

DOB: 03/22/23 Tattoo: 321 Registration #: 21017277

Woodhill Blueprint  
Myers Fair-N-Square M39  
Myers Miss Beauty M136

Connealy Confidence Plus  
Woodhill Evergreen Z291-B233  
Connealy Thunder  
Myers Miss Beauty M476

Raven Power Train E762  
Schaack Queen 007  
Schaack Queen 866

PA Power Tool 9108  
Raven Emma E 4241  
G A R Jeremiah  
Schaack Queen 132

CED	BW	WW	YW	Milk	Marb	RE	\$M	\$W	\$B	\$C
6	1.2	75	134	32	1	0.35	63	78	146	252

CED	BW	WW	YW	DMI	YH	SC	Doc	HP	CEM	Milk	MW	MH	CW	Marb	RE	Fat	Tend
60	53	14	14	77	40	19	76	11	95	18	22	43	18	21	69	74	33

Exemplary structure, out of a perfectly uddered Power Train daughter, combining strong conformation with exceptional maternal qualities. Sells bred to FHCC Foundation 1558 due to calve 3/13/25.

- Top 25% WW, Top 20% YW, Top 15% Milk
- Top 25% Marb, Top 10% \$W



**27**

## Schaack Emma 318

DOB: 03/24/23 Tattoo: 318 Registration #: 21017451

Woodhill Blueprint  
Myers Fair-N-Square M39  
Myers Miss Beauty M136

Connealy Confidence Plus  
Woodhill Evergreen Z291-B233  
Connealy Thunder  
Myers Miss Beauty M476

G A R Jeremiah  
Schaack Emma 729  
Schaack Emma 470

G A R Prophet  
G A R Daybreak 642  
Connealy KW 1664 Consensus  
Schaack Emma 011

CED	BW	WW	YW	Milk	Marb	RE	\$M	\$W	\$B	\$C
7	1.6	76	134	40	1.07	0.72	61	86	171	283

CED	BW	WW	YW	DMI	YH	SC	Doc	HP	CEM	Milk	MW	MH	CW	Marb	RE	Fat	Tend
42	55	28	29	65	61	18	65	91	96	4	52	61	54	8	56	68	69

Fair-N-Square daughters are among the most highly sought after in the Angus breed, known for their exceptional performance. This heifer will pass on that same power and growth to her future calves. Sells bred, exposed to Schaack Home Run/Schaack Satisfaction due to calve 4/12/25.

- Top 20% WW and YW, Top 1% Milk
- Top 20% Marb, Top 2% \$W, Top 25% \$B



**28**

## Schaack Blackcap 378

DOB: 02/27/23 Tattoo: 378 Registration #: 21017285

Woodhill Blueprint  
Myers Fair-N-Square M39  
Myers Miss Beauty M136

Connealy Confidence Plus  
Woodhill Evergreen Z291-B233  
Connealy Thunder  
Myers Miss Beauty M476

Schaack SC of 6193 9206  
Schaack Blackcap 187  
Schaack Blackcap 526

BUBS Southern Charm AA31  
KW 4453 Patriot 6193  
Connealy Stingray 9618  
Schaack Blackcap 308

CED	BW	WW	YW	Milk	Marb	RE	\$M	\$W	\$B	\$C
8	1.1	79	127	28	0.61	0.68	86	83	132	257

CED	BW	WW	YW	DMI	YH	SC	Doc	HP	CEM	Milk	MW	MH	CW	Marb	RE	Fat	Tend
39	45	8	38	82	65	50	89	3	66	49	27	46	24	48	25	96	54

Exceptional cow stock in this beautiful Fair-N-Square daughter. 6193 brings greatness, combining top-tier genetics with standout performance. Sells bred to FHCC Foundation 1558 due to calve 3/13/25.

- Top 15% WW, Top 30% YW
- Top 4% \$M, Top 5% \$W



**29**

## Schaack Shauna 369

DOB: 02/24/23 Tattoo: 369 Registration #: 21017283

Woodhill Blueprint  
Myers Fair-N-Square M39  
Myers Miss Beauty M136

Connealy Confidence Plus  
Woodhill Evergreen Z291-B233  
Connealy Thunder  
Myers Miss Beauty M476

G A R Home Town  
Schaack Shauna 172  
Schaack Shauna 919

G A R Ashland  
Chair Rock Sure Fire 6095  
TEX Playbook 5437  
Schaack Shauna 019

CED	BW	WW	YW	Milk	Marb	RE	\$M	\$W	\$B	\$C
7	1.8	73	118	32	1.02	0.74	85	81	167	302

CED	BW	WW	YW	DMI	YH	SC	Doc	HP	CEM	Milk	MW	MH	CW	Marb	RE	Fat	Tend
62	69	33	71	31	97	49	44	16	83	50	67	82	49	12	34	55	97

A balanced number profile out of a good-uddered Home Town daughter, back to the proven 019, a past donor in our program known for consistently producing top-quality offspring. Sells bred to FHCC Foundation 1558 due to calve 3/3/25.

- Top 15% Milk, Top 25% Marb, Top 5% \$M, Top 10% \$W, Top 15% \$C



**30**

## Schaack Elsiemere 3216

DOB: 04/13/23 Tattoo: 3216 Registration #: 21016878

V A R Signal 7244  
 RAR Signal 0418  
 Wilks Blackcap 6075

Basin Payweight 1682  
 PF CC&7 Henrietta Pride 1044  
 V A R Discovery 2240  
 Wilks Blackcap 3T05

BUBS Southern Charm AA31  
 Schaack Elsiemere 003  
 Schaack Elsiemere 310

Silveiras Conversion 8064  
 Hickory Hill Erica 009  
 Connealy Stingray 9618  
 Schaack Elsiemere 165

CED	BW	WW	YW	Milk	Marb	RE	\$M	\$W	\$B	\$C
7	0.9	76	121	27	0.61	0.87	73	77	156	275

GENESIS

CED	BW	WW	YW	DMI	YH	SC	Doc	HP	CEM	Milk	MW	MH	CW	Marb	RE	Fat	Tend
33	27	32	58	29	75	57	53	13	19	57	54	36	26	59	18	60	95

RAR Signal is one of the few calving-ease bulls sired by the renowned VAR Signal 7244. This heifer is perfectly made, a great representative of what an Angus heifer should be, with impressive \$M numbers to back her potential. A daughter of RAR Signal 0418, Schaack Elsiemere 3216 sells bred to Schaack Satisfaction due to calve 3/18/25. Her dam, 003, has a 117 Weaning Ratio.

•Top 20% WW, Top 25% \$M, Top 15% \$W, Top 30% \$C



# 31 Schaack Blueblood Lady 391

DOB: 03/01/23 Tattoo: 391 Registration #: 21016868

V A R Signal 7244  
RAR Signal 0418  
Wilks Blackcap 6075

Basin Payweight 1682  
PF CC&7 Henrietta Pride 1044  
V A R Discovery 2240  
Wilks Blackcap 3T05

Schaack SC of 6193 9206  
Schaack Blueblood Lady 125  
Schaack Blueblood Lady 783

BUBS Southern Charm AA31  
KW 4453 Patriot 6193  
Connealy Trooper 3682  
Lewis Blueblood Lady 162

CED	BW	WW	YW	Milk	Marb	RE	\$M	\$W	\$B	\$C
10	-0.8	62	115	30	1.14	0.39	63	64	168	281

CED	BW	WW	YW	DMI	YH	SC	Doc	HP	CEM	Milk	MW	MH	CW	Marb	RE	Fat	Tend
16	7	72	34	69	80	35	21	12	54	50	38	52	40	8	88	97	82

A calving-ease daughter of RAR Signal with a solid EPD profile, combining ease of birth with excellent performance potential. Sells bred to Schaack Satisfaction due to calve 3/13/25.

- Top 20% CED, Top 15% BW, Top 20% Milk
- Top 20% Marb, Top 30% \$B and \$C



# 32 Schaack Prairie Pride 3215

DOB: 04/10/23 Tattoo: 3215 Registration #: 21016888

V A R Signal 7244  
RAR Signal 0418  
Wilks Blackcap 6075

Basin Payweight 1682  
PF CC&7 Henrietta Pride 1044  
V A R Discovery 2240  
Wilks Blackcap 3T05

BUBS Southern Charm AA31  
Schaack Prairie Pride 078  
Schaack Prairie Pride 685

Silveiras Conversion 8064  
Hickory Hill Erica 009  
Connealy Stingray 9618  
Schaack Prairie Pride 455

CED	BW	WW	YW	Milk	Marb	RE	\$M	\$W	\$B	\$C
12	-0.2	62	113	18	1.31	0.45	70	53	188	314

CED	BW	WW	YW	DMI	YH	SC	Doc	HP	CEM	Milk	MW	MH	CW	Marb	RE	Fat	Tend
9	13	59	36	53	85	79	3	9	5	89	34	53	24	10	69	78	47

Here's a high \$C heifer with impressive \$M and exceptional marbling. She combines top maternal traits with outstanding carcass quality. Sells bred, exposed to Schaack Home Run/Schaack Satisfaction due to calve 3/23/25.

- Top 10% CED, Top 20% BW, Top 10% Marb, Top 15% \$B, Top 10% \$C



# 33 Schaack Emma 3210

DOB: 04/13/23 Tattoo: 3210 Registration #: 21016866

V A R Signal 7244  
RAR Signal 0418  
Wilks Blackcap 6075

Basin Payweight 1682  
PF CC&7 Henrietta Pride 1044  
V A R Discovery 2240  
Wilks Blackcap 3T05

V A R Legend 5019  
Schaack Emma 031  
Schaack Emma 729

V A R Discovery 2240  
PF CC&7 Henrietta Pride 1044  
G A R Jeremiah  
Schaack Emma 470

CED	BW	WW	YW	Milk	Marb	RE	\$M	\$W	\$B	\$C
7	0.2	72	136	18	1.22	0.58	45	57	195	298

CED	BW	WW	YW	DMI	YH	SC	Doc	HP	CEM	Milk	MW	MH	CW	Marb	RE	Fat	Tend
52	26	28	8	67	43	30	12	48	7	90	9	16	23	8	41	78	99

Calving ease and strong maternal traits, out of a well-uddered VAR Legend daughter. This heifer combines excellent ease of birth with top-notch maternal potential. Sells bred, exposed to Schaack Home Run/Schaack Satisfaction due to calve 3/23/25.

- Top 20% YW, Top 15% Marb, Top 10% \$B, Top 20% \$C



**34**

## Schaack Eriskay 307

DOB: 04/06/23 Tattoo: 307 Registration #: 21016851

PA Power Tool 9108  
Raven Power Train E762  
Raven Emma E 4241

G A R Predestined  
Shamrocks Beebee Queen 3095  
Hoover Dam  
PCAR Emma E 2215

Connealy Stingray 9618  
Schaack Eriskay 431  
Eriskay of Rollin Rock 7315

Connealy Final Solution  
Powa of Conanga 9618  
EXAR 263C  
Eriskay of Rollin Rock 2892

CED	BW	WW	YW	Milk	Marb	RE	\$M	\$W	\$B	\$C
5	-0.2	63	106	24	1.18	0.8	65	65	171	287

CED	BW	WW	YW	DMI	YH	SC	Doc	HP	CEM	Milk	MW	MH	CW	Marb	RE	Fat	Tend
45	12	64	79	29	67	92	21	21	81	55	69	51	74	13	48	59	97

Beautifully profiled, this heifer is out of 431, one of the best Stingray daughters we own, bringing top-tier genetics and outstanding potential. Sells bred to Schaack Satisfaction due to calve 3/8/25.

•Top 20% BW, Top 15% Marb, Top 25% \$B, Top 25% \$C

**35**

## Schaack Miss Wix 3211

DOB: 04/13/23 Tattoo: 3211 Registration #: 21016857

V A R Power Play 7018  
Huwa 8113 Power Play 0114  
Huwa 2193 F Disclosure 8113

Basin Payweight 1682  
Sandpoint Blackbird 8809  
Huwa Full Disclosure  
G A R Prophet 2193

Connealy Stingray 9618  
Schaack Miss Wix 449  
Miss Wix 040 of Mc Cumber

Connealy Final Solution  
Powa of Conanga 9618  
O C C Missing Link 830M  
Miss Wix 848 of Mc Cumber

CED	BW	WW	YW	Milk	Marb	RE	\$M	\$W	\$B	\$C
5	1.9	69	106	12	0.26	0.63	51	58	113	198

CED	BW	WW	YW	DMI	YH	SC	Doc	HP	CEM	Milk	MW	MH	CW	Marb	RE	Fat	Tend
66	60	46	89	41	95	72	86	97	49	100	71	97	84	97	68	39	51

Out of a moderate-framed Stingray daughter who has consistently pulled her weight for 10 years at Schaack Ranch, this heifer comes from a proven, reliable maternal line. Sells bred to Schaack Satisfaction due to calve 3/13/25.

•Top 35% WW



# 36

## Schaack Barbaramere 1131

DOB: 09/11/21 Tattoo: 1131 Registration #: 20600138

Connealy Confidence Plus  
Connealy Emerald  
Jace of Conanga 6571

Connealy Confidence 0100  
Elbanna of Conanga 1209  
Connealy Armory  
Jazzy of Conanga 4660 860C

Connealy Consensus 7229  
Schaack Barbaramere 302  
Sitz Barbaramere 1223

Connealy Consensus  
Blue Lilly of Conanga 16  
Sitz Alliance 6595  
Sitz Barbaramere 1663

CED	BW	WW	YW	Milk	Marb	RE	\$M	\$W	\$B	\$C
4	1.1	70	133	26	0.79	1.07	77	67	180	310

CED	BW	WW	YW	DMI	YH	SC	Doc	HP	CEM	Milk	MW	MH	CW	Marb	RE	Fat	Tend
35	22	29	8	93	12	71	68	10	16	58	35	10	12	57	3	17	16

Here's your chance to own a direct daughter of 302, who is still producing exceptional offspring at age 11. 301 is one of the best donors to ever walk at Schaack Ranch, known for consistently passing on her outstanding genetics. Sells bred to Schaack Wildcat 3100 due to calve 3/20/25.

- Top 20% WW, Top 10% YW
- Top 25% Marb, Top 4% RE,
- Top 10% \$M, Top 25% \$W, Top 10% \$B, Top 3% \$C

# 38

## Schaack Barbaramere 1134

DOB: 09/17/21 Tattoo: 1134 Registration #: 20600140

Connealy Confidence Plus  
Connealy Emerald  
Jace of Conanga 6571

Connealy Confidence 0100  
Elbanna of Conanga 1209  
Connealy Armory  
Jazzy of Conanga 4660 860C

Connealy Consensus 7229  
Schaack Barbaramere 302  
Sitz Barbaramere 1223

Connealy Consensus  
Blue Lilly of Conanga 16  
Sitz Alliance 6595  
Sitz Barbaramere 1663

CED	BW	WW	YW	Milk	Marb	RE	\$M	\$W	\$B	\$C
15	-3	46	93	32	0.73	0.6	75	57	134	249

CED	BW	WW	YW	DMI	YH	SC	Doc	HP	CEM	Milk	MW	MH	CW	Marb	RE	Fat	Tend
1	1	91	64	12	83	14	74	13	1	26	94	94	84	50	33	53	50

Flush sister to Lot 36, this heifer boasts exceptional maternal numbers. Her dam, 302, continues to impress with consistent performance and top-tier genetics. Sells bred to Schaack Wildcat 3100 due to calve 3/20/25.

- Top 2% CED, Top 1% BW, Top 15% Milk
- Top 30% Marb, Top 15% \$M

# 37

## Schaack Elluna 1133

DOB: 09/13/21 Tattoo: 1133 Registration #: 20600134

Connealy Confidence Plus  
Connealy Emerald  
Jace of Conanga 6571

Connealy Confidence 0100  
Elbanna of Conanga 1209  
Connealy Armory  
Jazzy of Conanga 4660 860C

Pine View Prophet P414  
Schaack Elluna 836  
Schaack Elluna 237

G A R Prophet  
Yon Sarah Z116  
MCATL Pure Product 903-55  
V D A R Elluna 9112

CED	BW	WW	YW	Milk	Marb	RE	\$M	\$W	\$B	\$C
5	0.9	62	116	31	0.61	1.01	73	67	151	269

CED	BW	WW	YW	DMI	YH	SC	Doc	HP	CEM	Milk	MW	MH	CW	Marb	RE	Fat	Tend
81	80	62	30	56	83	82	51	20	99	32	75	86	62	53	4	39	51

Another impressive Emerald daughter with a beautiful udder. Her granddam, Elluna 237, is still producing at age 12, showcasing the durability and longevity of this outstanding cow family. Sells bred to Schaack Wildcat 3100 due to calve 3/20/25.

- Top 20% Milk, Top 15% RE, Top 25% \$M, Top 30% \$W





Lot 39

### 4 - GVC Desiree F024 x Schaack Satisfaction Embryos



**GVC DESIREE F024**  
Dam of Lot 39 Embryos  
Registration #: 19290006

*GVC Desiree F024* GVC Desiree F024 boasts an impressive EPD profile. With a remarkable spread from her top 10% WW of +79 to her top 4% YW of +146, she demonstrates exceptional growth potential. Her carcass traits are equally outstanding, featuring a top 3% Marb and top 10% RE. Additionally, her \$B and \$C values rank within the top 5%, solidifying her as a standout female in any program.

We are thrilled about the pairing of F024 and Satisfaction. This carefully designed mating combines elite genetics to deliver embryos with exceptional potential for growth, outstanding carcass traits, and superior economic value.

CED	BW	WW	YW	Milk	Marb	RE	\$M	\$W	\$B	\$C
8	.7	79	146	20	1.29	.96	65	64	185	305

V A R Discovery 2240  
**V A R Legend 5019**  
PF CC&7 Henrietta Pride 1044

A A R Ten X 7008 S A  
Deer Valley Rita 0308  
SydGen C C & 7  
Sitz Henrietta Pride 643T

MCC Daybreak  
**G A R Daybreak 1402**  
G A R 5050 New Design N549

Boyd New Day 8005  
MCC Miss Focus 134  
G A R New Design 5050  
G A R Objective 1085

### Projected EPDs:

### GVC Desiree F024 x Schaack Satisfaction

CED	BW	WW	YW	Milk	Marb	RE	\$M	\$W	\$B	\$C
8	1.4	79	139	25	1.23	.99	77	72	181	312



**SCHAACK SATISFACTION**  
Sire of Lot 39 & 40 Embryos  
Registration #: 19682617

G A R Sunrise  
**G A R Sunbeam**  
G A R Ingenuity 3132

MCC Daybreak  
G A R Objective R227  
G A R Ingenuity  
G A R 28 Ambush N340

Connealy Cade  
**Avira of Conanga 814R**  
Avie of Conanga 624P

Connealy Greeley  
Britta of Conanga 157E  
Basin Payweight 1682  
Avalla of Conanga 343C

Satisfaction boasts a highly balanced EPD profile, with a WW in the top 15%, YW in the top 25%, CEM in the top 20%, and Docility in the top 10%. Not only does Satisfaction promise outstanding growth, but he also brings exceptional carcass traits, ranking in the top 10% for both Marbling and RE. From an economic standpoint, he excels with a top 5% ranking for \$M, top 10% for \$W, top 15% for \$B, and top 10% for \$C.





Lot 40

4 - KW 7010 1664 Consensus 3405 x Schaack Satisfaction Embryos

*Consensus 3405* exemplifies exceptional growth potential, featuring double-digit calving ease, a top 5% WW, and a top 10% YW, all capped by an impressive top 4% ranking in \$W. Her growth-oriented genetic profile sets her apart as a remarkable.

We're excited about the pairing of 3405 and Satisfaction, a mating full of potential. These embryos are designed to emphasize growth, combining traits that drive increased productivity and profitability.



Connealy Consensus  
**Connealy KW 1664 Consensus**  
Ebony of Conanga 9680

KMK Alliance 6595 I87  
Blinda of Conanga 004  
ALC Big Eye D09N  
Ebony of Conanga 878

S S Objective T510 OT26  
**Rita 7041 of Rita 5M13 OBJ**  
Rita 5M13 of 2V9 Predestined

S S Traveler 6807 T510  
S S Miss Rita R011 7R8  
G A R Predestined  
Rita 2V9 of 2536 1407

CED	BW	WW	YW	Milk	Marb	RE	\$M	\$W	\$B	\$C
12	1.6	81	140	28	.60	.78	64	79	156	266

*Projected EPDs:*  
**KW 7010 1664 Consensus 3405 x Schaack Satisfaction**

CED	BW	WW	YW	Milk	Marb	RE	\$M	\$W	\$B	\$C
10	1.8	80	136	29	.89	.90	76	79	167	292

*Featuring*

**Satisfaction is the \$35,000 bull purchased by ST Genetics in our 2021 Bull Sale.**

**Selling 4 - IVF embryos with a guarantee of 2 pregnancies if implanted by a certified technician.**





## **SCHAACK RANCH**

*Wall, SD*

Expand your herd with confidence through this remarkable offering. Alongside the registered lots, we are proud to feature 125 bred commercial females, ready to make a difference in your herd.

Offering 25 coming 3-year-old Angus females, all home-raised and bred for performance. AI'd to start calving on March 25th, with cleanup service to Schaack Satisfaction. These females represent a powerful opportunity to add proven genetics and maternal strength to your herd.

Offering 15 proven home raised older cows, 10 to 11 years old, with a lifetime of raising exceptional bull and heifer calves. These cows are still performing well and ready to contribute to your program. These proven cows are AI'd to begin calving on March 12 th and were exposed to Schaack Ranch's herd bulls for clean up. Contact Clay for details on paper availability and additional information.

Don't miss your chance to add to your breeding program with these replacement females. Don't miss your chance to add to your breeding program with these young replacement females.



## **KENNEDY H & S PARTNERSHIP**

*Philip, SD*

Kennedy H & S Partnership is offering 60 head of exceptional coming 6-year-old cows that are as functional as they are fancy. These proven, productive cows have been bred to Schaack Angus Bulls, known for their calving ease, growth, and carcass quality, ensuring a profitable and uniform calf crop. Set to calve within a tight 60-day window beginning in April 2025, this group offers the efficiency and ease of management every operation values. With years of productivity still ahead, these prime-age cows combine structural soundness, maternal excellence, and eye appeal, making them a smart investment for any herd.



## **JEFF & JAMIE SCHAACK**

*Henry, SD*

Jeff and Jamie are offering 50 head of home-raised, first-calf Angus heifers bred to Schaack Angus Bulls, renowned for their calving ease and exceptional genetics. These heifers will begin calving on April 15th, with a 45-day window, ensuring a productive and efficient calving season.

Additionally, they have 50 head of high-quality females originating from the Bruce Bruch Ranch, also set to calve within the same 45-day window starting April 15th. Both groups showcase fancy, well-cared-for cattle that will elevate any operation with their uniformity, maternal traits, and proven breeding.



## **CHURCHHILL RANCH**

*Valentine, NE*

Churchill Ranch is offering 43 head of bred Angus heifers, a top-notch set of home-raised cattle that truly stand out. These fancy heifers have been bred to Schaack Ranch calving ease bulls, renowned for their calving ease and performance traits. Starting to calve on March 15th with a short 20-day window, these heifers are perfect for efficient management and producing a uniform group of calves. Available exclusively on video, this impressive offering combines exceptional quality, uniformity, and the reliability of a carefully managed breeding program.



## **SCHAACK RANCH**

*Wall, SD*

Schaack Ranch is offering 85 top-quality April-born replacement heifer calves sourced from the reputable Tyler and Tiffany Robertson operation are available. These quality heifers will make a valuable addition to any herd.



## **KETTLESON | BEUG RANCH**

*Sturgis, SD*

Ketelson & Beug Ranch is offering 70 head of fancy Angus heifer calves, a standout group backed by over 25 years of proven genetics from Schaack Angus Bulls. These April-born heifer calves are bangs vaccinated and represent the ranch's commitment to quality and consistency. With an impressive average weight of 650 lbs., this group offers uniformity, growth potential, and the exceptional maternal traits that Schaack genetics are known for. These heifers are an excellent addition to any program focused on building a productive and reliable cow herd. If replacement heifers are on your radar, these are truly worth a closer look.



## **BRUCE BRUCH**

*Sturgis, SD*

For over 25 years, Bruce has trusted Schaack Angus Bulls to elevate his herd, and now he's offering an impressive group of 70 April-born replacement heifers. These bangs-vaccinated heifers, averaging 600lbs., are a testament to his commitment to quality and consistency. Known for producing market-topping steers, this group showcases the proven genetics and care that define Bruce's program. If you're looking for high-quality replacement heifers, this offering is one you can't afford to miss.

# Service Sires



## SCHAACK HOME RUN

**DOB:** 2/24/21      **Tattoo:** 1002      **Registration #:** 20224351

G A R Ashland  
G A R Home Town  
Chair Rock Sure Fire 6095

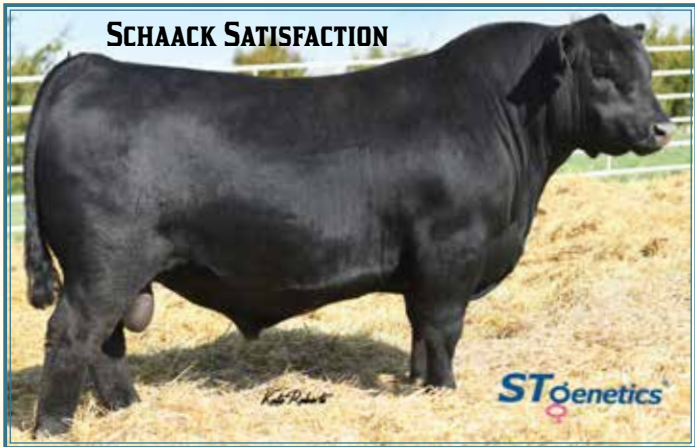
G A R Early Bird  
Chair Rock Ambush 1018  
G A R Sure Fire  
Chair Rock Progress 3005

Connealy KW 1664 Consensus  
KW 7010 1664 Consensus 3405  
Rita 7041 of Rita 5M13 OBJ

Connealy Consensus  
Ebony of Conanga 9680  
S S Objective T510 OT26  
Rita 5M13 of 2V9 Predestined

CED	BW	WW	YW	Milk	Marb	RE	\$W	\$B	\$C
16	-.7	76	136	34	1.27	1.26	84	201	338

\*Service sire of lots 1, 3, 4, 5, 6, 8, 10, 17, 21, 22, 23, 26, 27, 32, 33



## SCHAACK SATISFACTION

**DOB:** 3/21/19      **Tattoo:** 9340      **Registration #:** 19682617

Silveiras Conversion 8064  
BUBS Southern Charm AA31  
Hickory Hill Erica 009

BT Crossover 758N  
EXG Saras Dream S609 R3  
Connealy Stimulus 8419  
Hickory Hill Erica TA32

Deer Valley Patriot 3222  
KW 4453 Patriot 6193  
KW 5M13 GAR Composure 4453 Rita 5M13 of 2V9 Predestined

Connealy Capitalist 028  
Deer Valley Rita 0274

G A R Composure  
G A R Objective T510 OT26

CED	BW	WW	YW	Milk	Marb	RE	\$W	\$B	\$C
8	2.0	79	131	29	1.17	1.02	78	177	319

\*Service sire of lots 1, 3, 4, 5, 6, 8, 9, 10, 11, 12, 16, 17, 18, 19, 20, 21, 22, 23, 26, 27, 30, 31, 32, 33, 34, 35



## SCHAACK LOAD UP 0256

**DOB:** 3/14/20      **Tattoo:** 0256      **Registration #:** 19982788

Plattmere Weigh Up K360  
KW Overload 6223  
KW 3137 Consensus 7229 3033

Sitz Upward 307R  
Barbara of Plattmere 337  
Connealy Consensus 7229  
G A R Objective 3137

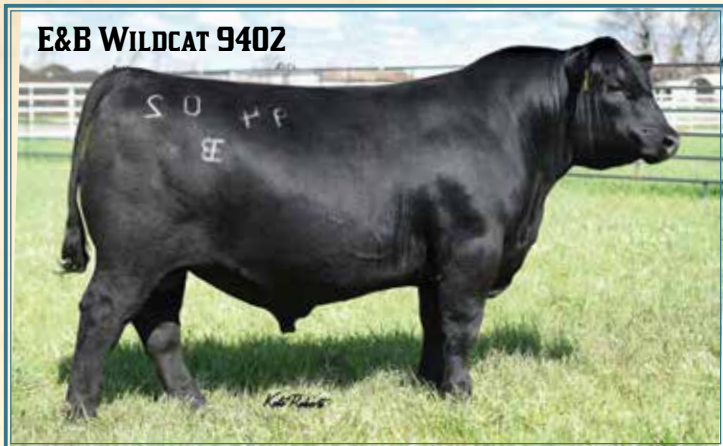
V A R Legend 5019  
Schaack Miss Wix 815  
Miss Wix 0175 of Mc Cumer

V A R Discovery 2240  
PF CC&7 Henrietta Pride 1044  
Sitz Rainmaker 6536  
Miss Wix 620 of Mc Cumer

CED	BW	WW	YW	Milk	Marb	RE	\$W	\$B	\$C
10	.6	92	152	30	.55	.86	95	143	284

\*Service sire of lot 7

# Service Sires



## E&B WILDCAT 9402

**DOB:** 10/1/19      **Tattoo:** 9402      **Registration #:** 19810163

V A R Discovery 2240  
GAR Discovery 6737H  
G A R Ingenuity 3132

Connealy Confidence Plus  
E&B Lady Plus 643  
E&B Lady Credence 190

A A R Ten X 7008 S A  
Deer Valley Rita 0308  
G A R Ingenuity  
G A R 28 Ambush N340

Connealy Confidence 0100  
Elbanna of Conanga 1209  
SQ Credence 67S  
E&B Lady 1407 New Design 464

CED	BW	WW	YW	Milk	Marb	RE	\$W	\$B	\$C
14	1.0	86	154	25	1.41	.95	76	223	358

• Service sire of lots 13, 14



## FHCC FOUNDATION 1558

**DOB:** 8/26/21      **Tattoo:** 1558      **Registration #:** 20119569

Baldrige Alternative E125  
MGR JP Rita 7037

G A R Sure Fire  
Woodland Blackcap Lady 84  
Basin Blackcap Lady 0172

Poss Easy Impact 0119  
Baldrige Blackbird A030  
Basin Payweight 1682  
MGR Rita 2145

Connealy In Sure 8524  
Chair Rock 5050 G A R 8086  
Hoover Dam  
Basin Blackcap Lady 311S

CED	BW	WW	YW	Milk	Marb	RE	\$W	\$B	\$C
16	-.6	76	135	22	1.55	.98	71	241	395

• Service sire of lots 24, 25, 28, 29

## RAR SIGNAL 0418

**DOB:** 1/3/20      **Tattoo:** 0418      **Registration #:** 19695961

Basin Payweight 1682  
V A R Signal 7244  
PF CC&7 Henrietta Pride 1044

Basin Payweight 006S  
21AR O Lass 7017  
SydGen C C & 7  
Sitz Henrietta Pride 643T

V A R Discovery 2240  
Wilks Blackcap 6075  
Wilks Blackcap 3T05

A A R Ten X 7008 S A  
Deer Valley Rita 0308  
Summitcrest Complete 1P55  
QHF Blackcap 6E2 of4V16 4355

CED	BW	WW	YW	Milk	Marb	RE	\$W	\$B	\$C
4	1.4	78	143	23	1.03	.70	66	196	312

• Service sire of lot 15

## SCHAACK WILDCAT 3100

**DOB:** 2/27/23      **Tattoo:** 3100      **Registration #:** 20886106

GAR Discovery 6737H  
E & B Wildcat 9402  
E&B Lady Plus 643

BUBS Southern Charm AA31  
Schaack Expectation 126  
SCAR 3R61 by K62 8584

V A R Discovery 2240  
G A R Ingenuity 3132  
Connealy Confidence Plus  
E&B Lady Credence 190

Silveiras Conversion 8064  
Hickory Hill Erica 009  
SCAR Long Range 8584  
G A R Expectation K62

CED	BW	WW	YW	Milk	Marb	RE	\$W	\$B	\$C
7	1.8	78	132	28	1.45	1.03	78	196	329

• Service sire of lots 36, 37, 38



Join us for our

# ANNUAL PRODUCTION SALE



WEDNESDAY, APRIL 16<sup>TH</sup>, 2025 | 1PM AT THE RANCH, WALL SD

**SELLING** 100 Yearling Bulls | 25 Fall Bulls | 15 Two-year-olds Bulls

## SIRES INCLUDE

Schaack Home Run 1002 | Schaack Satisfaction | Schaack Load Up 0256 | Connealy Commerce  
E & B Wildcat 9402 | FHCC Foundation 1558 | Woodhill Authentic

# Reclaim Your Time!

### RECORD ASSISTANCE:

- ✓ Registrations
- ✓ Transfers
- ✓ Weights
- ✓ Genomic Testing
- ✓ Inventory Reporting
- ✓ Parentage Exclusions

### SALE ASSISTANCE:

- ✓ Footnotes
- ✓ Top Lot Offerings
- ✓ Percentile Rankings
- ✓ Sale Day Supplement
- ✓ Sale Day Pen Map
- ✓ Handling of Transfers

### OTHER SERVICES:

- ✓ Website Management
- ✓ Facebook Management
- ✓ Customer Engagement
- ✓ Custom Report Creation
- ✓ Efficiency Analysis
- ✓ Technology Assessment

*Experience you can trust. Service you can count on!*



ANGUS DATA SERVICES  
CHRIS STALLO | 816-344-4760  
WWW.STALLOCONSULTING.COM

We Appreciate  
Your Support!



**SCHAACK RANCH**  
23650 Sage Creek Rd  
Wall, SD 57790



**SCHAACK RANCH**

605-279-2869 OR 605-685-3311 • CHSCHAACK@GWTC.NET • WWW.SCHAACKRANCH.COM